



COMPANY PROFILE



DÉCOR EARTH GRC

Specialist in: Glass Fibre Reinforced Concrete & GRP/FRP/GRG
In Technical Collaboration with



Fibre Technologies
International Ltd., U.K.



PRESTIGE APARTMENTS BANGLORE

DÉCOR EARTH GRC - Profile

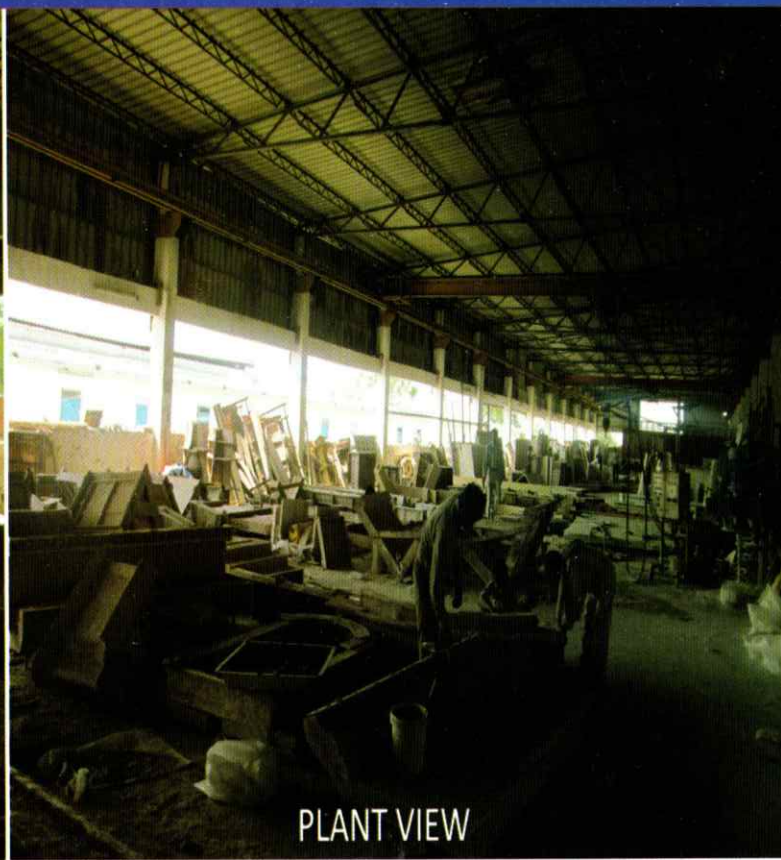
WE ARE THE PART OF DÉCOR EARTH GROUP HAVING AN EXISTENCE OF OVER THREE YEARS. THE GROUP'S TURNOVER IS RS. 70 MILLION AND IS HEADQUARTED AT THE TIJARA BYPASS. WE ARE INTO MULTIPLE BUSINESS VERTICALS THAT INCLUDE GRC/GFRC/FRP (GLASS FIBRE REINFORCED CONCRETE/FIBRE REINFORCED PLASTIC) AND INSTITUTION. OUR FLAGSHIP COMPANIES ARE DÉCOR EARTH GRC (GRC/GFRC/FRP - GLASS FIBER REINFORCED CONCRETE/FIBER REINFORCED PLASTIC) & DREAM CLASSES.

The Mission Statement

DÉCOR EARTH GRC, A PIONEER IN GRC/GFRC, IS A LEADER IN PROVIDING VALUE-ADDED SERVICES TO OUR CUSTOMER BY CREATING A SUCCESSFUL PARTNERSHIP WITH THEM THROUGH QUALITY CONSTRUCTION, TECHNICAL AND MANAGEMENT TECHNICAL AND MANAGEMENT SERVICES. THE WAY TO DO SO IS TO DELIVER HIGH-QUALITY, COST-EFFECTIVE PROJECTS ON SCHEDULE BY EMPLOYING AND SUPPORTING MOTIVATED, FLEXIBLE, AND FOCUSED TEAMS. WE VALUE THE IMPORTANCE OF OUR RELATIONSHIPS AND WILL CONTINUE TO REMAIN FAIR AND TRUE IN OUR DEALINGS WITH ALL EMPLOYEES, CLIENTS, VENDORS AND PARTNERS. OUR CLIENTS COUNT ON OUR DEPENDABILITY, OUR DRIVE, AND OUR INTEGRITY. WE TAKE GREAT PRIDE IN OUR ACCOMPLISHMENTS AND BUILD ON THEM EVERY DAY. OUR PLEDGE IS TO ESTABLISH LASTING RELATIONSHIP WITH OUR CUSTOMERS BY EXCEEDING THEIR EXPECTATIONS AND GAINING THEIR TRUST THROUGH EXCEPTIONAL PERFORMANCE BY EVERY MEMBER OF OUR TEAM. WE WANT TO ENSURE THE LONGEVITY OF OUR COMPANY THROUGH REPEAT AND REFERRAL BUSINESS ACHIEVED BY CUSTOMER SATISFACTION IN ALL AREAS INCLUDING TIMELINES, ATTENTION TO DETAIL AND SERVICE-MINDED ATTITUDES. WE WISH TO PERFORM FOR OUR CUSTOMERS THE HIGHEST LEVEL OF QUALITY SERVICES AT FAIR AND MARKET COMPETITIVE PRICES. OUR MOTTO IS TO MAINTAIN THE HIGHEST LEVELS OF PROFESSIONALISM, INTEGRITY, HONESTY AND FAIRNESS IN OUR RELATIONSHIPS WITH OUR SUPPLIERS, SUBCONTRACTORS, PROFESSIONAL ASSOCIATES AND CUSTOMERS.



PLANT VIEWW



PLANT VIEW



DLF LUCKNOW

INTRODUCTION & INFRASTRUCTURE

DÉCOR EARTH GRC (DEGRC) HAS BEEN SERVING ITS ARCHITECTS & CLIENTS NEED FOR LAST FOUR YEARS. DEGRC IS MANUFACTURING GRC (GLASS FIBRE REINFORCED CONCRETE) IN TECHNICAL COLLABORATION WITH FIBRE TECHNOLOGIES U.K. IN ITS MOST ULTRA MODERN PLANT LOCATED AT TIJARA NEAR BHIWADI (RAJASTHAN) WITH A HUGE PRODUCTION CAPACITY OF 1 LAC SQ. FT. PER MONTH OF GRC & ALLIED PRODUCTS DEGRC UNDERTAKES WORKS OF GRC INCLUDING ITS SUPPLY AND INSTALLATION & HAS HUGE RESOURCE OF TRAINED MANPOWER FOR SAFE AND QUALITY EXECUTION OF GRC ERECTION AT SITE. DEGRC HAS ALREADY EXECUTED MANY PRESTIGIOUS PROJECTS SUCCESS FULLY WITH LEADING NATIONAL & INTERNATIONAL ARCHITECTS IN ALMOST ALL PARTS OF THE COUNTRY.

CONTENTS

introduction & infrastructure	4
technical specification	5
installation at site	6
GRC in Architecture	7
GRC Screens	8
GRC cladding	9
GRC Louvers, Murals & Finials	10
GRC Moulding, Coloumns, Cornices & Balusters	11
GCR in Pylons, Entablature & Brackets	12
GRC For Domes	13
GRC in Engineering	14
GRC In Windows, Formwork, Railing & Bridges	15
Completed Prestigious Projects	16-19
GRC Planters	20
FRP Planters	21
GRC Screen Design with Border	22
GRC Screen Modular Design	23



Patterns of balcony in Gypsum



Balcony mold in FRP



GRC Casting with spray process



Final finish



Demolding



Casting with premix method

Technical Specification

THE FOLLOWING ARE BROADLY THE MAIN INGREDIENTS THAT GO INTO THE MANUFACTURING OF ANY GRC ELEMENTS, NAMELY:

- CEMENT CONTENTS (WHITE/GREY) 50+/-5%
- QUARTS FINE SILICA SAND (GRADED AND SELECTED) 50+/-5%
- ALKALI RESISTANT (AR) GLASS FIBER (NEG, JAPAN) 3% TO 5%
- POLYMER 2% TO 3% APPROX
- PLASTICIZER 0.50%
- POLYSTYRENE AS PER REQUIREMENT
- MOULD MATERIAL RUBBER/FRP (RECKLI GERMANY/DURA MOULD U.K)
- PIGMENTS BAYER'S, GERMANY

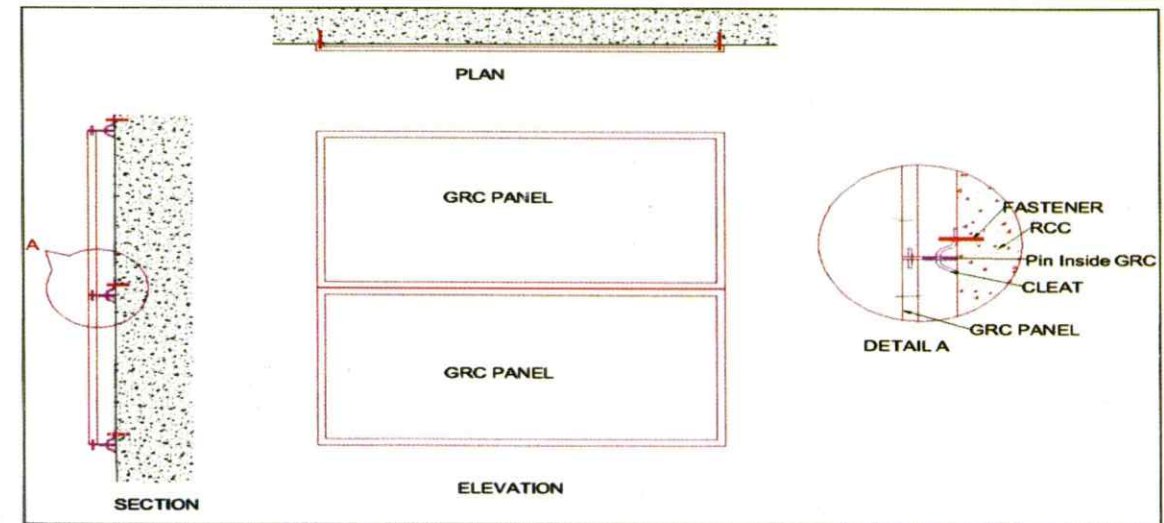
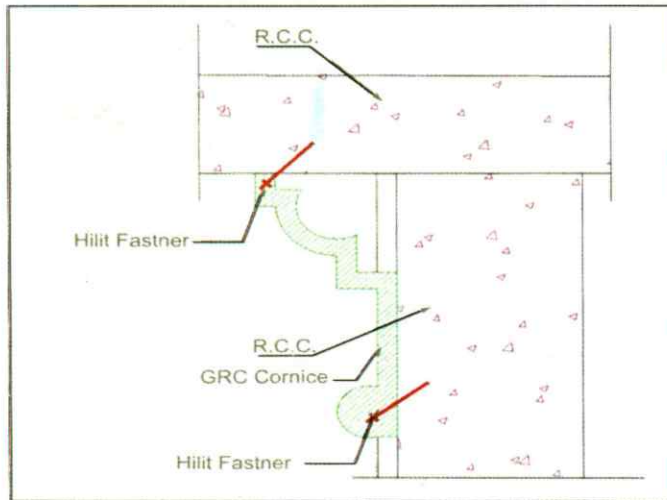
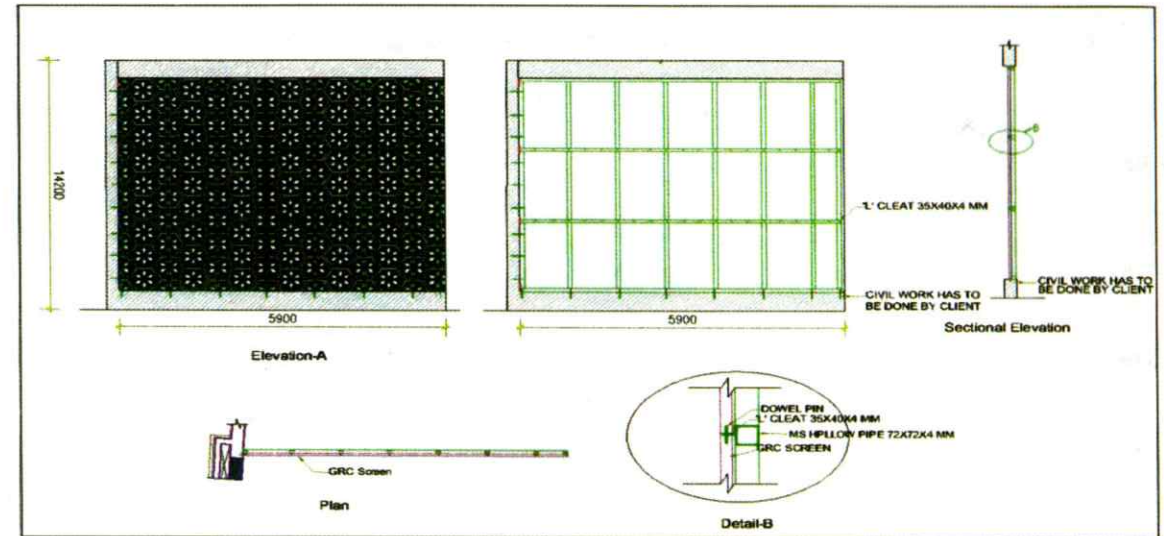
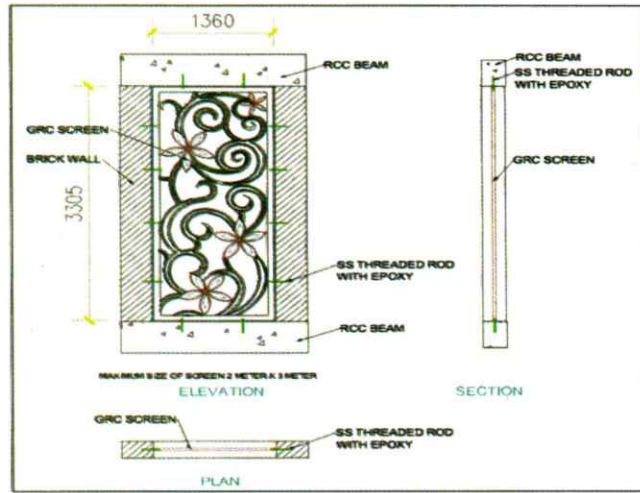
GRC Material Properties

- Thickness - 10mm to 40mm (or more depending upon size & shape)
- Weight - 25 to 70 kg. per sq. mtr. (or more depending upon size & shape of features.)
- Dry Density - 1.8 to 2.2 T/M³
- Colour - Any earthen colour
- Texture - Acid Wash / Sotne Finish
Plain Finish,
Paintable/Metalic Finish

Typical Properties of GRC

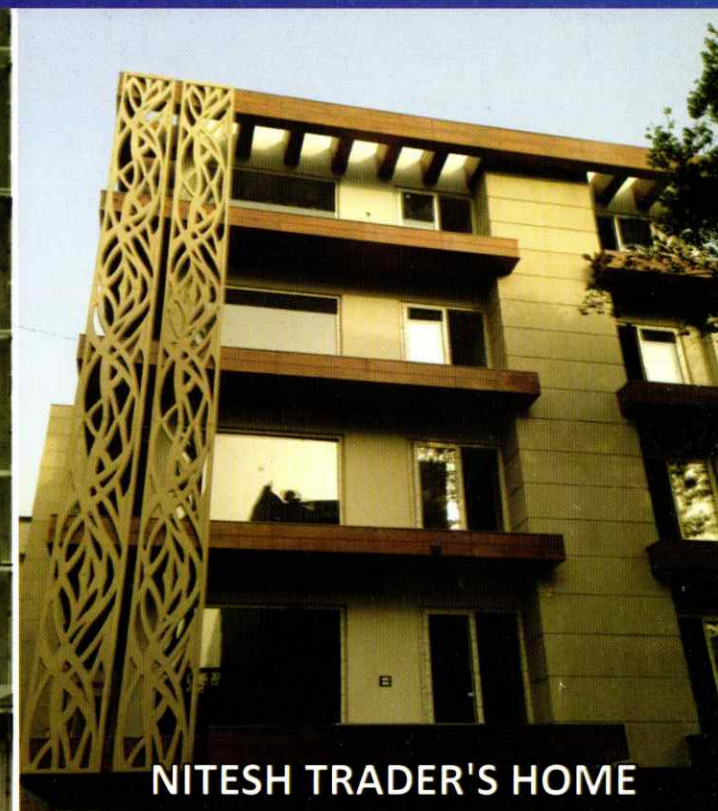
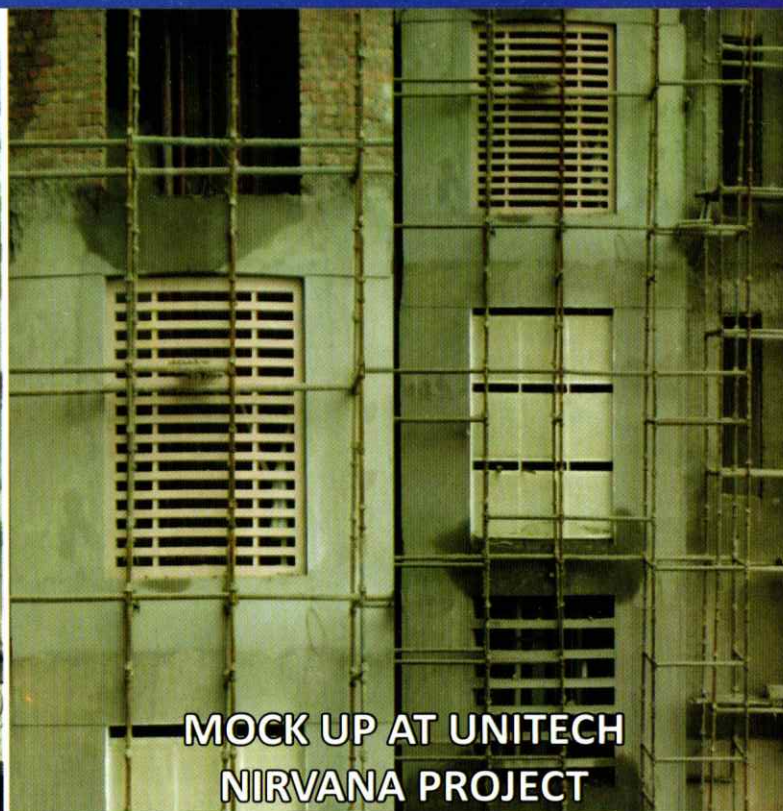
Typical Property	(at 28 days)	
	Result Machine Spary	Premix Casting
Glass Fibre (Alkali Resistant)	3% - 5% Depending upon GRC components	2.5% - 5.5%
Tensile Strength	6 to 11 Mpa	5 to 8 Mpa
Compressive Strength	40 to 65 Mpa	35 to 55 Mpa
Impact Strength	7 to 20 kg/M ²	7 to 15 Kg/M ²

Typical Fixing Detail of GRC Screens, Cladding Panel, Cornice



Installation

INSTALLATION OF GRC ELEMENTS AT SITE IS DONE BY MPPL FULLY TRAINED MANPOWER. GRC ELEMENTS ARE FIXED STRICTLY AS PER THE APPROVED SHOP DRAWING OF FIXING USING SS CLEATS, THREADED RODS, GALVANIZED BRACKETS, HILTI FASTENER ECT. ALL SAFETY PRECAUTIONS ARE TAKEN AS PER SITE CONDITIONS DURING FIXING. EVERY NEW SITE HAS NEW CHALLENGES AND MPPL HAS SUCCESSFULLY TAKEN UP MANY CHALLENGING WORK OF FIXING OF GRC ELEMENTS IN THE PAST AND FULLY EQUIPPED TO DO MORE IN FUTURE.



MOCK UP AT UNITECH
NIRVANA PROJECT

NITESH TRADER'S HOME

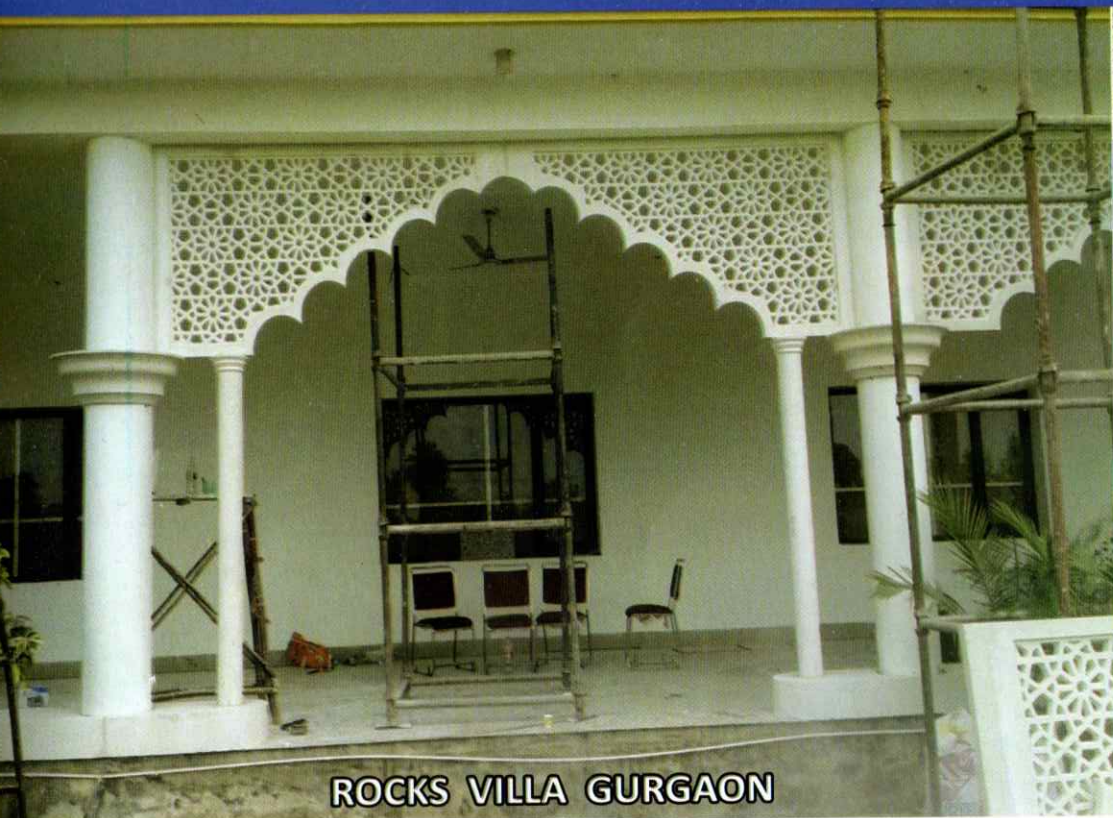
GRC in Architecture

IN RECENT YEARS, A SHORTAGE OF SKILLED WORKERS COMBINED WITH THE NEED TO PRODUCE LIGHTER WEIGHT BUILDING COMPONENTS HAS LED TO SIGNIFICANT ADVANCEMENTS IN THE USE OF PREFABRICATED GRC ELEMENTS. BUILDERS WORLDWIDE ARE APPRECIATING THE INCREASE IN SPEED OF CONSTRUCTION THAT GRC PROVIDES.

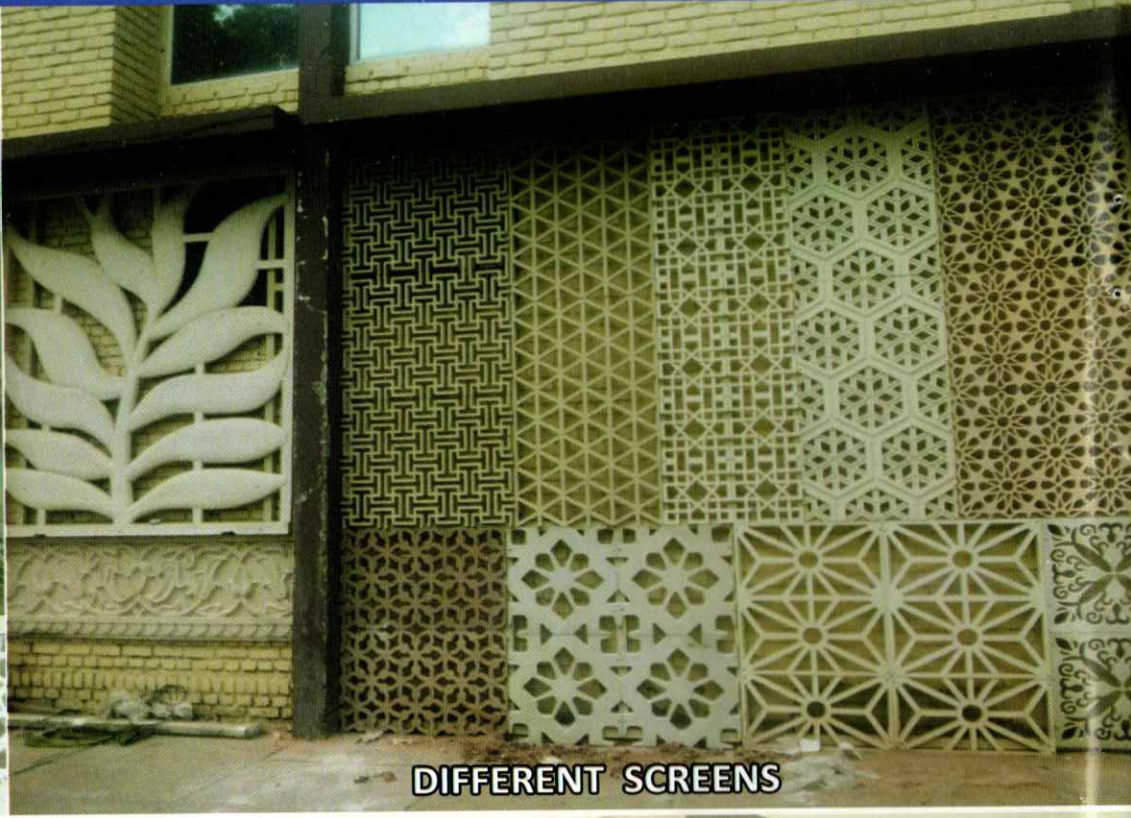
GRC CAN BE MOULDED IN THE PLANT IN ANY SHAPE, FORM AND THUS GIVES FREEDOM IN THE HAND OF ARCHITECTS TO CREATE IMAGINATIVE DESIGNS FOR THE BEAUTIFICATION OF THEIR BUILDINGS ELEVATIONS. GRC IS A SUBSTITUTE FOR CARVED STONE AND IS VERY USEFUL IN REPLACING HEAVY STONE MOULDING, CORNICES ETC BECAUSE IT IS LIGHTER IN WEIGHT AND IS CASTED IN ONLY APPROX 15 TO 20 MM THICKNESS THUS REDUCING THE DEAD WEIGHT ON STRUCTURE.

GRC ELEMENTS

- SCREENS
- CORNICES
- CLADDING
- FINIALS
- MURALS
- COLOUMNS & CAPITALS
- PEDESTAL
- BALUSTERS
- WINDOW/DOOR SURROUNDS
- RAILING
- LOUVERS & FINS
- SIGNAGES



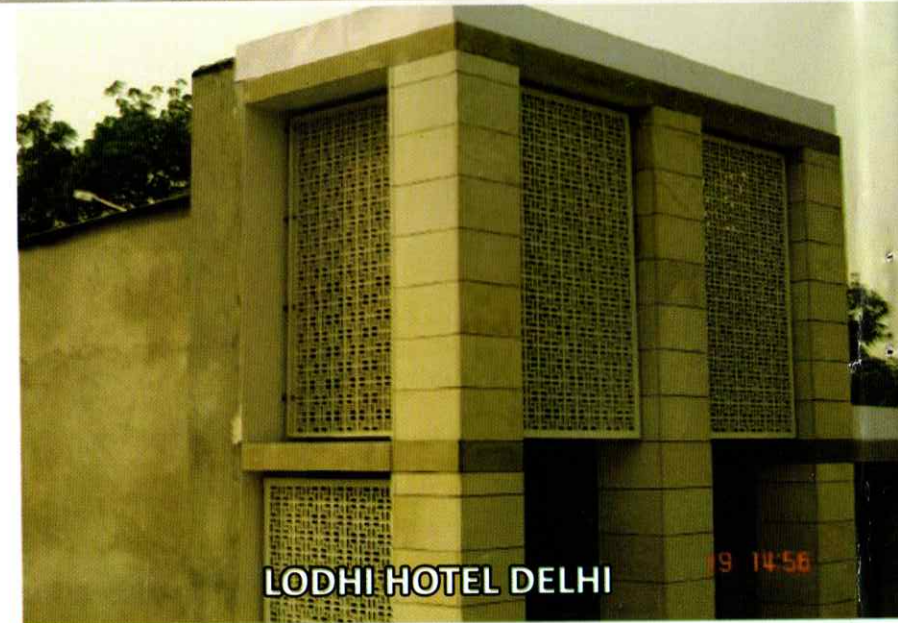
ROCKS VILLA GURGAON



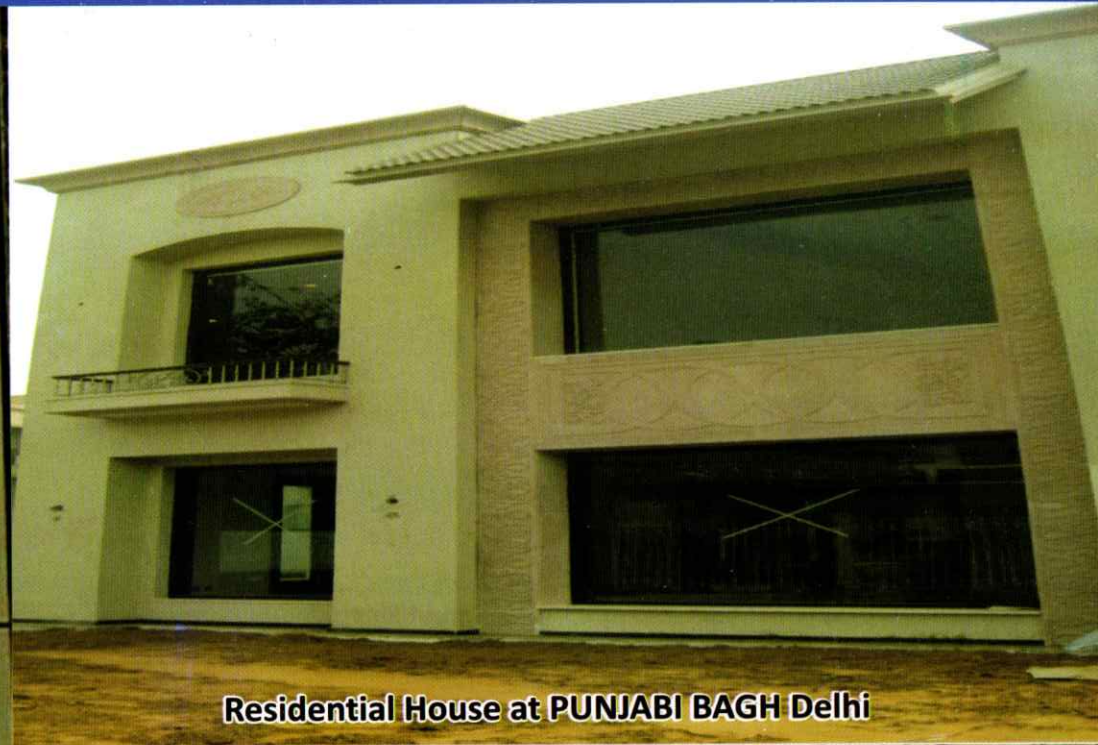
DIFFERENT SCREENS

GRC Screens

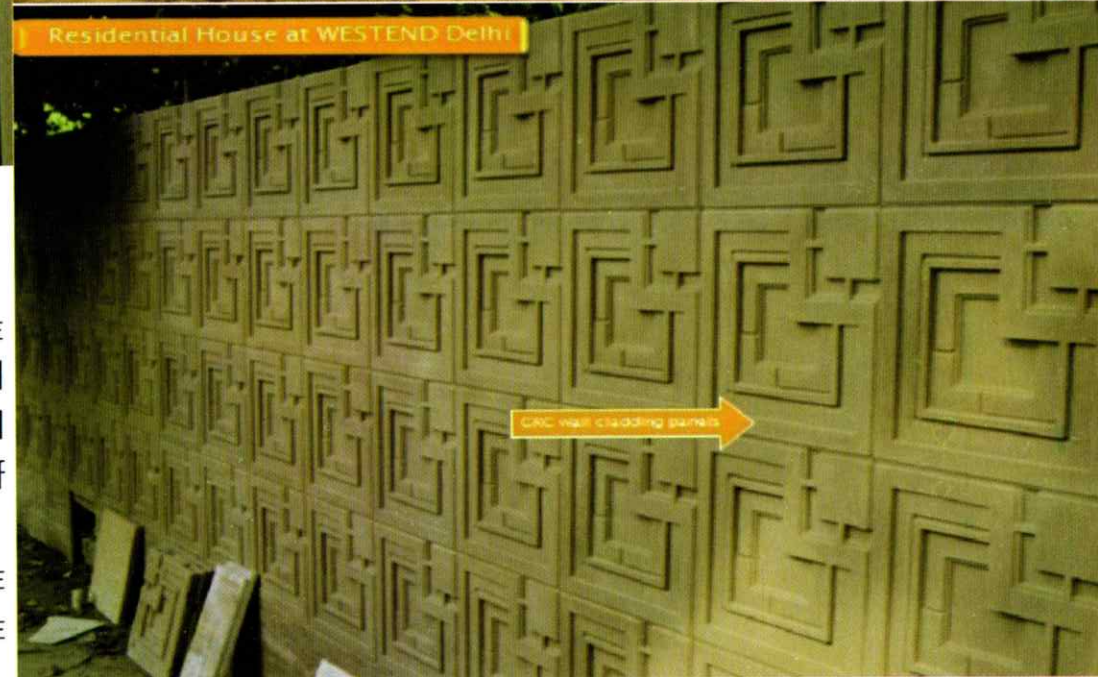
THE MOST COMMONLY USED ELEMENT FOR BEAUTIFICATION ARE GRC SCREENS WHICH ARE WIDELY USED IN INDIA AND ARE VERY POPULAR. THE SCREENS CAN BE MADE IN ANY EARTHEN COLOR MATCHING TO THE STONE LOOK OR CAN ALSO BE PROVIDED IN PAINTABLE FINISH. THEY CAN BE MADE IN MINIMUM 20MM THICKNESS AND ARE NORMALLY MADE 25-30MM THICK WITH BORDER OF 40-60MM THICKNESS. SCREENS WITH BRODER ARE NORMALLY MADE IN IDEAL SIZE OF 2 MTR X 3 MTR IN SINGLE PIECE. THEY CAN ALSO BE MADE IN REPETITIVE MODULES FOR LARGER OPENINGS AND CAN BE DRY CLAPPED ON STEEL SUB STRUCTURE BEHIND.



LODHI HOTEL DELHI



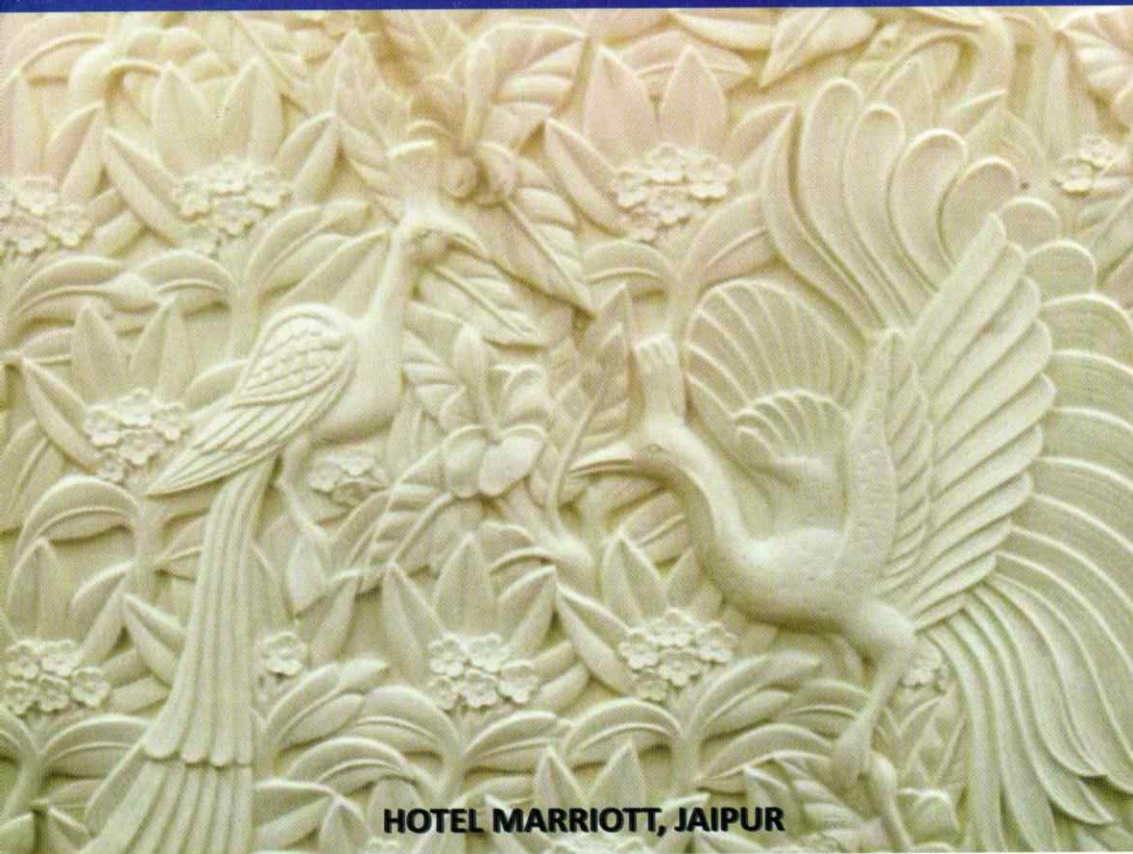
Residential House at PUNJABI BAGH Delhi



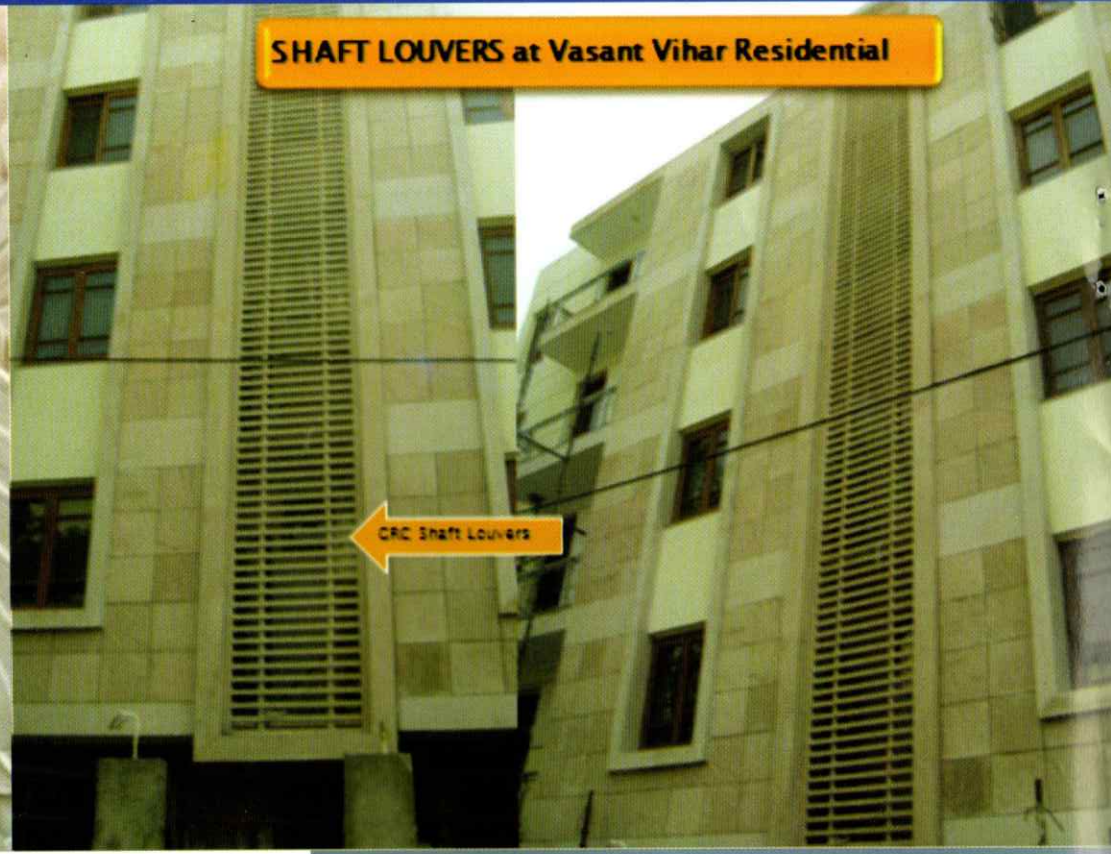
GRC in Cladding

GRC is ONE OF THE MOST POPULAR MATERIALS USED FOR CREATIVE PREFABRICATED ARCHITECTURAL cladding. GRC's ability to be MOULDED INTO THIN, LIGHTWEIGHT PANELS WITH A WIDE VARIETY OF SHAPES, FORMS AND SURFACE FINISHES HAS BEEN APPRECIATED BY A GROWING AUDIENCE OF ARCHITECTS AND ENGINEERS WORLDWIDE.

GRC Cladding HAS HUGE ADVANTAGES COMPARED TO ACP cladding like VERY HIGH LIFE SPAN, LOW MAINTENANCE COST, THERMAL INSULATION, FIRE RESISTANCE ETC.



HOTEL MARRIOTT, JAIPUR

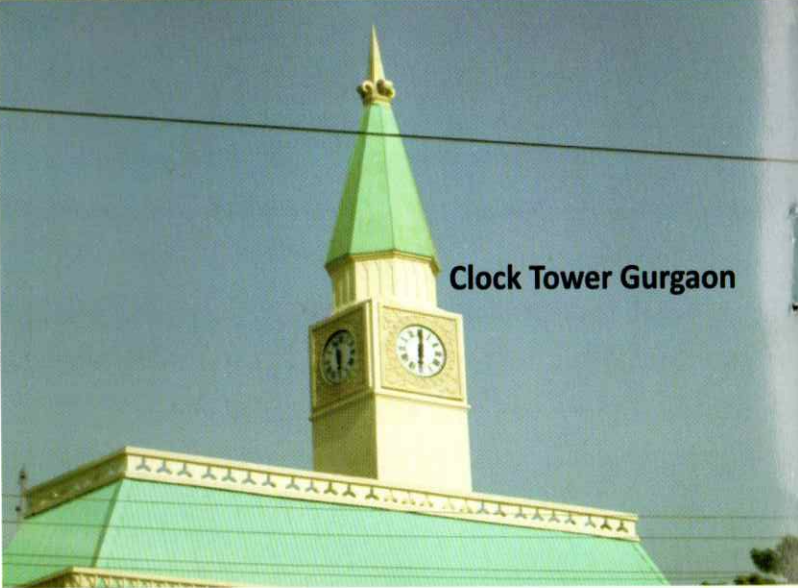


SHAFT LOUVERS at Vasant Vihar Residential

GRC Shaft Louvers

GRC Louvres/Murals/Finials

IN MODERN BUILDING GRC IS EXTENSIVELY USED FOR CREATING BEAUTIFUL FACADES USING STRAIGHT LINE LOUVRES AND FINS. THEY CAN BE MADE AND FIXED IN VARIOUS SIZES AND LARGER DESIGNS. ALSO MURALS AND FINIALS ARE USED EXTENSIVELY FOR HIGHLIGHTING THE BUILDING FACADES WHICH LOOKS BEAUTIFUL WITH NIGHT LIGHTING.



Clock Tower Gurgaon



GRC Columns/Mouldings/Cornices/Baluster

GRC is used to produce beautiful architectural mouldings and features. Whilst often cast with thicknesses in excess of 25 mm these products remain easy to handle and erect, and permit the architect or engineer an unrivalled freedom for creative design, GRC does not suffer from corrosion of the reinforcement. GRC cornices has huge advantages in reducing dead weight on buildings compared to stone and traditional RCC mouldings. They can be made in even larger sizes and profiles with less joints.





ITC GRAND BHARAT(Pylon)



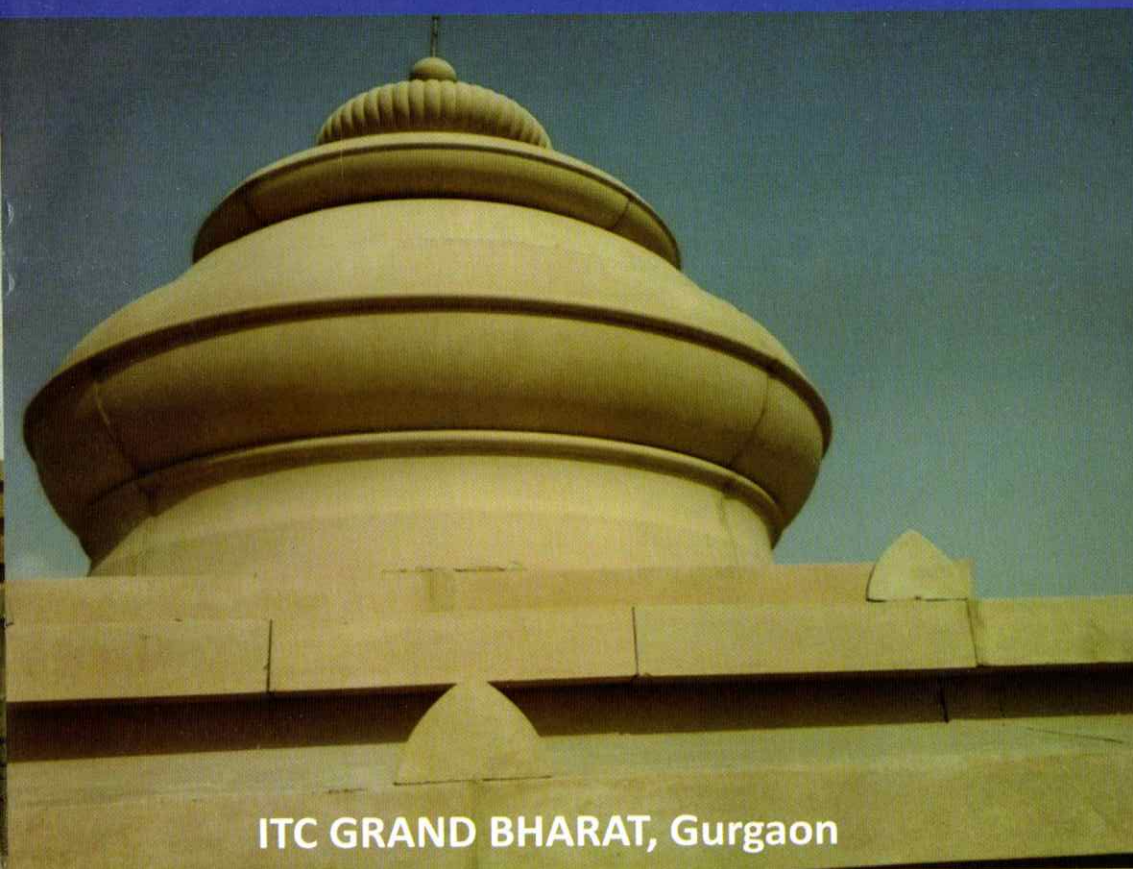
ITC GRAND BHARAT(Entablature)

GRC For Pylons/Entablature/Brackets

IN MODERN BUILDINGS GRC IS EXTENSIVELY USED FOR CREATING BEAUTIFUL FACADES USING STRAIGHT LINE BRACKETS. THEY CAN BE MADE AND FIXED IN VARIOUS SIZES AND LARGER DESIGNS. ALSO ENTABLATURE AND PYLONS ARE USED EXTENSIVELY FOR HILIGHTING THE BUILDING FACADES WHICH LOOKS BEAUTIFUL WITH NIGHT LIGHTING.



ITC GRAND BHARAT(Brackets)



ITC GRAND BHARAT, Gurgaon



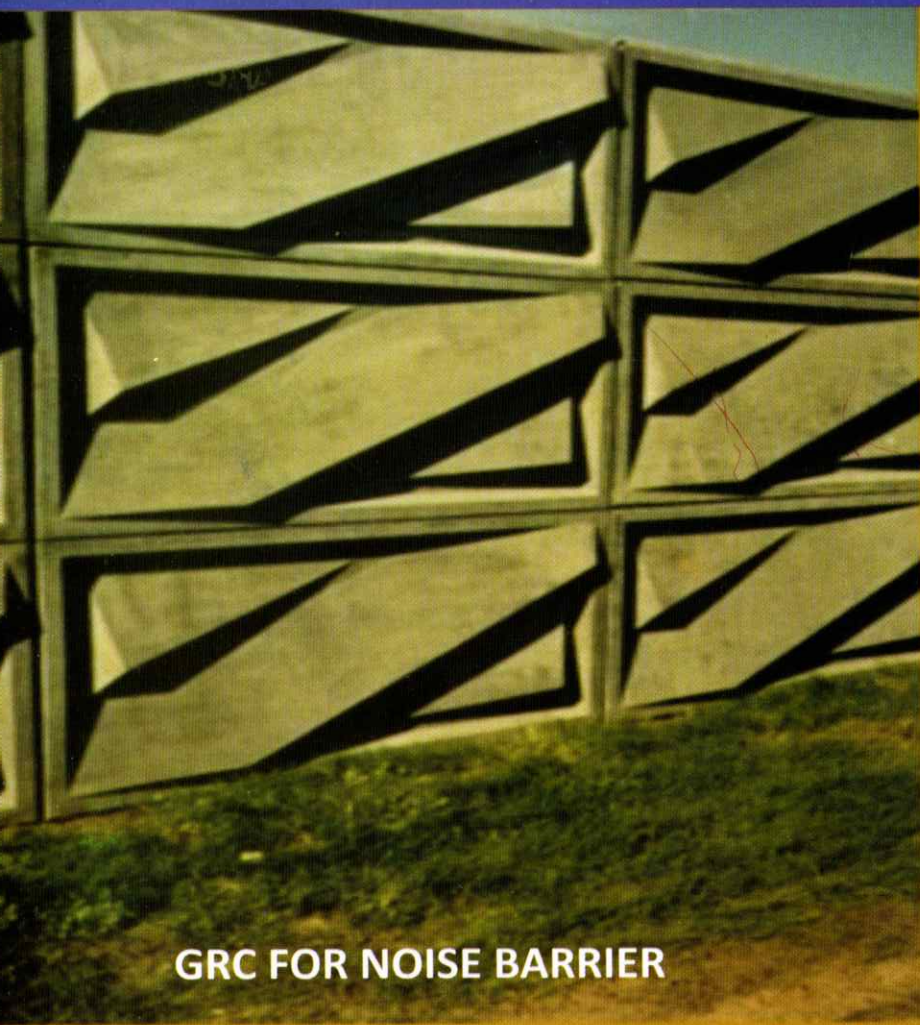
HASAN RESIDANCE, FARIDABAD

GRC for Domes

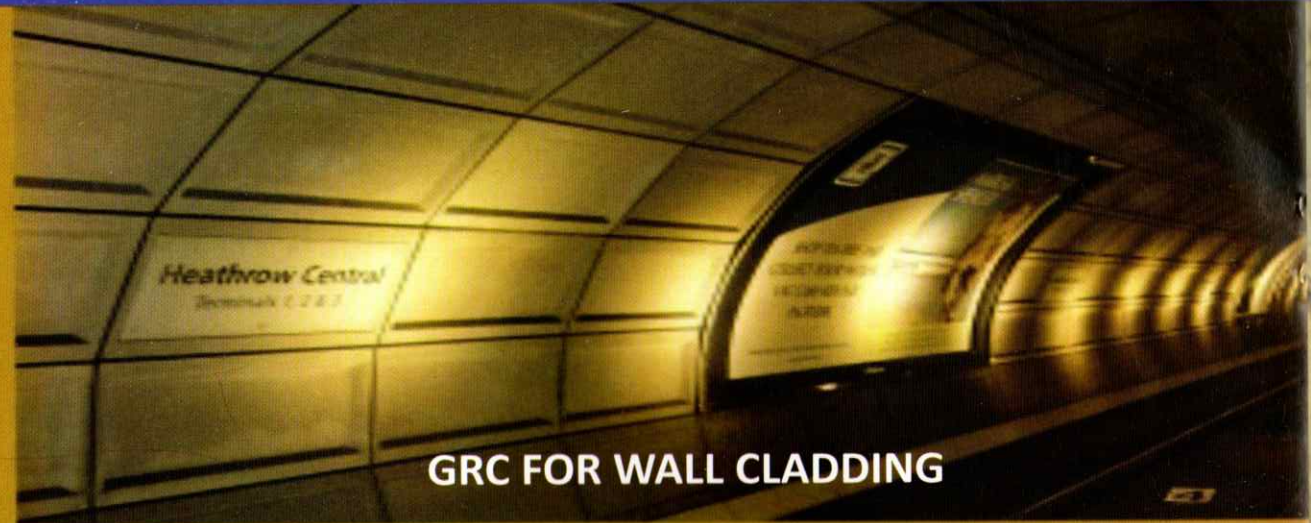
GRC is an ideal material for domes cladding because it can be casted in thin sections and reduces dead weight on the structure provided for the domes. First time in India we have done "insitu" casting of GRC domes at ITC project Chennai in which the dome size was 30MTRX30MTRX12MTRHEIGHT. They can be made in acid washed, stone finish or paintable individual site requirements. By "insitu" casting of GRC domes we achieved less joints and better finish.



ITC GRAND CHOLA, Chennai



GRC FOR NOISE BARRIER



GRC FOR WALL CLADDING



GRC FOR CABLE MANAGEMENT

GRC in Engineering

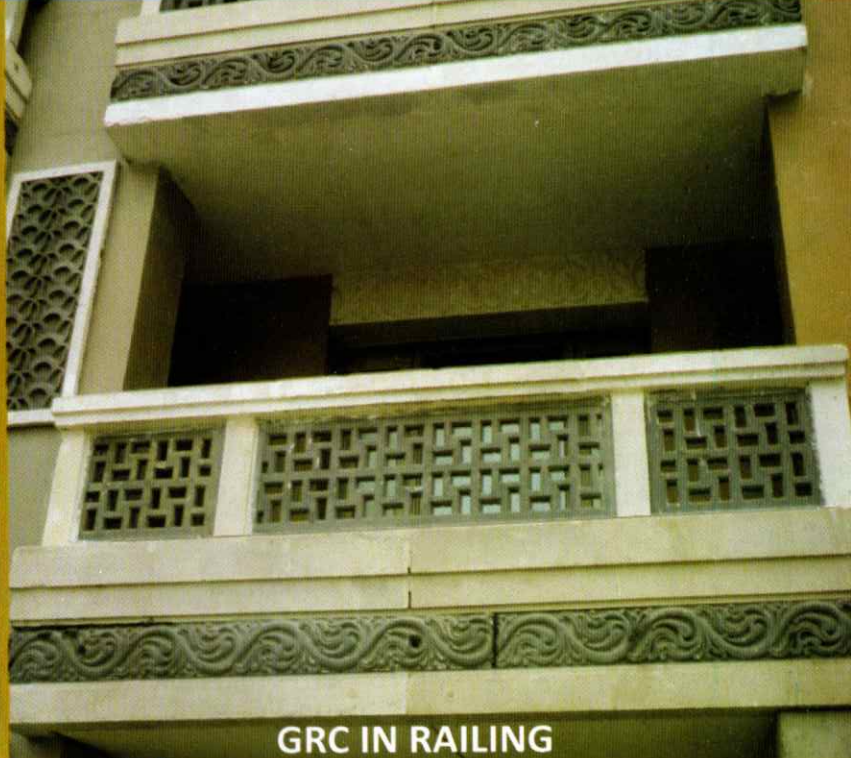
COMPARED TO TRADITIONAL CONCRETE, GRC OFFERS THE ENGINEER AN UNRIVALLED RANGE OF MATERIAL PROPERTIES. GRC IS NOT A SINGLE MATERIAL. ITS PROPERTIES CAN BE ENGINEERED TO SUIT EACH APPLICATION. FOR EXAMPLE, FOR PRODUCTS SUCH AS PERMANENT FORMWORK, HIGH SHORT-TERM STRENGTH IS REQUIRED. WHILE FOR UTILITY AND DRAINAGE PRODUCTS LIGHT WEIGHT COMBINED WITH DURABILITY GIVE GRC A CONSIDERABLE ADVANTAGE. GRC USED EXTENSIVELY IN NOISE BARRIERS WORLDWIDE BECAUSE OF ITS PROPERTY OF SOUND ABSORPTION AND DESIGN CAPABILITY. EXAMPLES OF ENGINEERING APPLICATIONS CAN BE FOUND WORLDWIDE.



GRC IN WINDOWS



Permanent Formwork

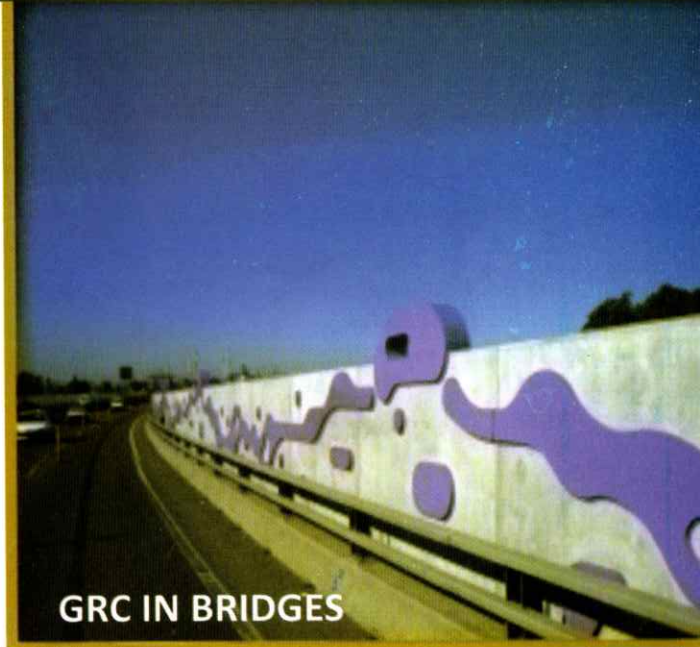


GRC IN RAILING

Grc In Windows/Permanent Formwork/Railing/Bridges

GRC IS A VERY VERSATILE MATERIAL FOR USE IN LANDSCAPING. IT IS WORLDWIDE USED FOR SCREENS AND RAILING, IN BOUNDARY WALLS, GAZIBOS, GRC PLANTERS, FOUNTAINS, WATER BODIES, BENCHES, ENTRANCE GATE, AROUND SWIMMING POOL, MURALS.

IN BUILDING PROJECTS, LIESURE FACILITIES, URBAN RENEWALS AND MUNICIPALS SCHEMES EVER INCREASING ATTENTION IS BEING FOCUSED ON THE BUILT ENVIRONMENT. GRC IS PLAYING A MOJAR ROLE IN SEATING, PLASNTERS, KIOSKS, BOLLARDS, SIGNS, STATUES AND FOUNTAIN, TO NAME BUT A FEW, ALL BENEFIT FROM BEING MADE IN GRC WITH ITS ABILITY TO MAKE IN TAILOR SHAPE, FORM AND SURFACE FINISH AND TO BE AESTHETICALLY COMPATIBLE WITH THE CHOSEN ENVIRONMENT. GRC ALSO PROVIDES THEME PARK AND ZOOLOGICAL ARCHITECTS WITH A MEDIUM THROUGH WHICH THEY CAN TURN DREAMS INTO REALITY. MANY OF THE WORLDS LARGEST THEME PARK AND ZOO S USE GRC TO CREATE ROCKSCAPES, REPLICA BUILDINGS, SIMULATED ENVIRONMENTS FOR ANIMALS AND MUCH MORE.



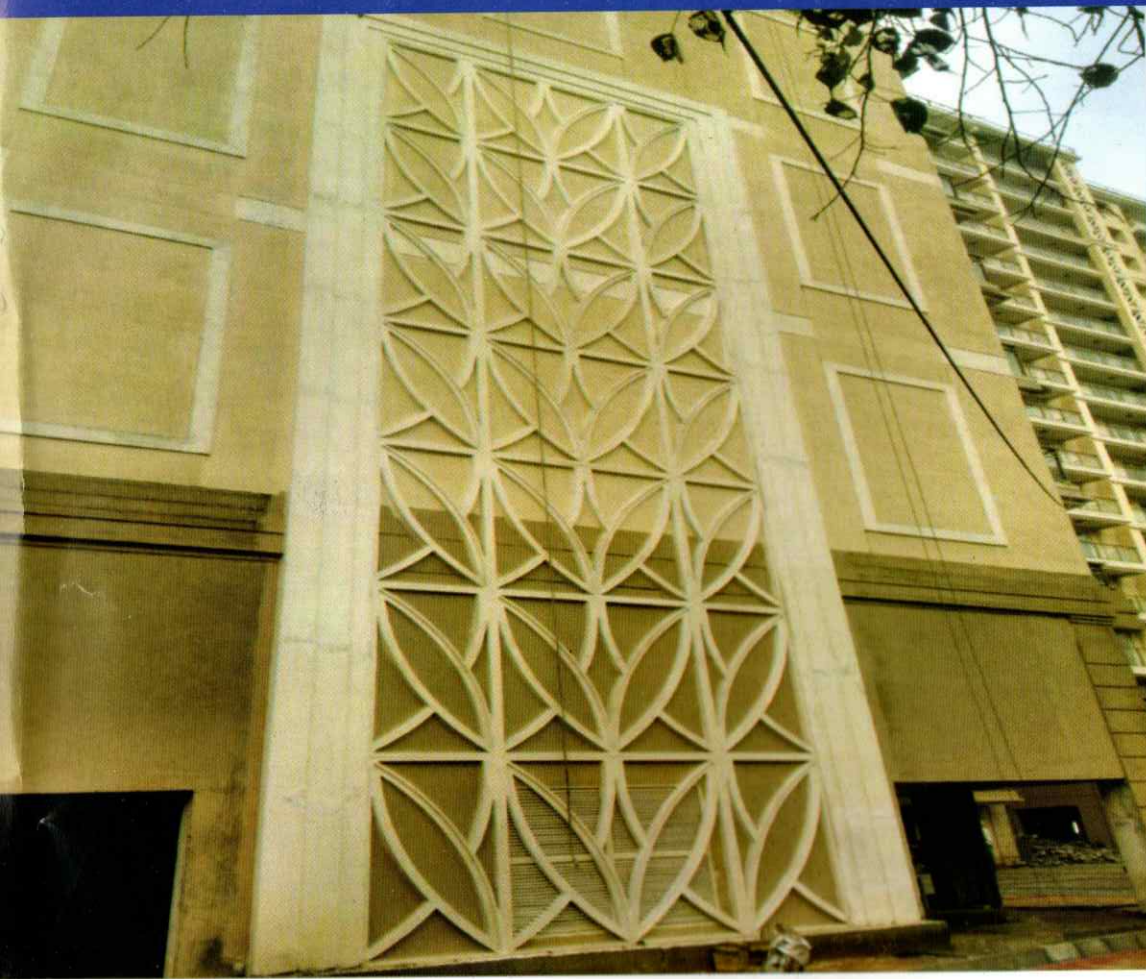
GRC IN BRIDGES



COMPLETED PRESTIGIOUS PROJECTS

PROJECT NAME : DLF WOODLAND HEIGHTS, BANGLORE
Client Name : DLF Limited
GRC Application : GRC Screens In Elevation, Cladding
Approximate Area : 1,00,000 Sq. Ft.





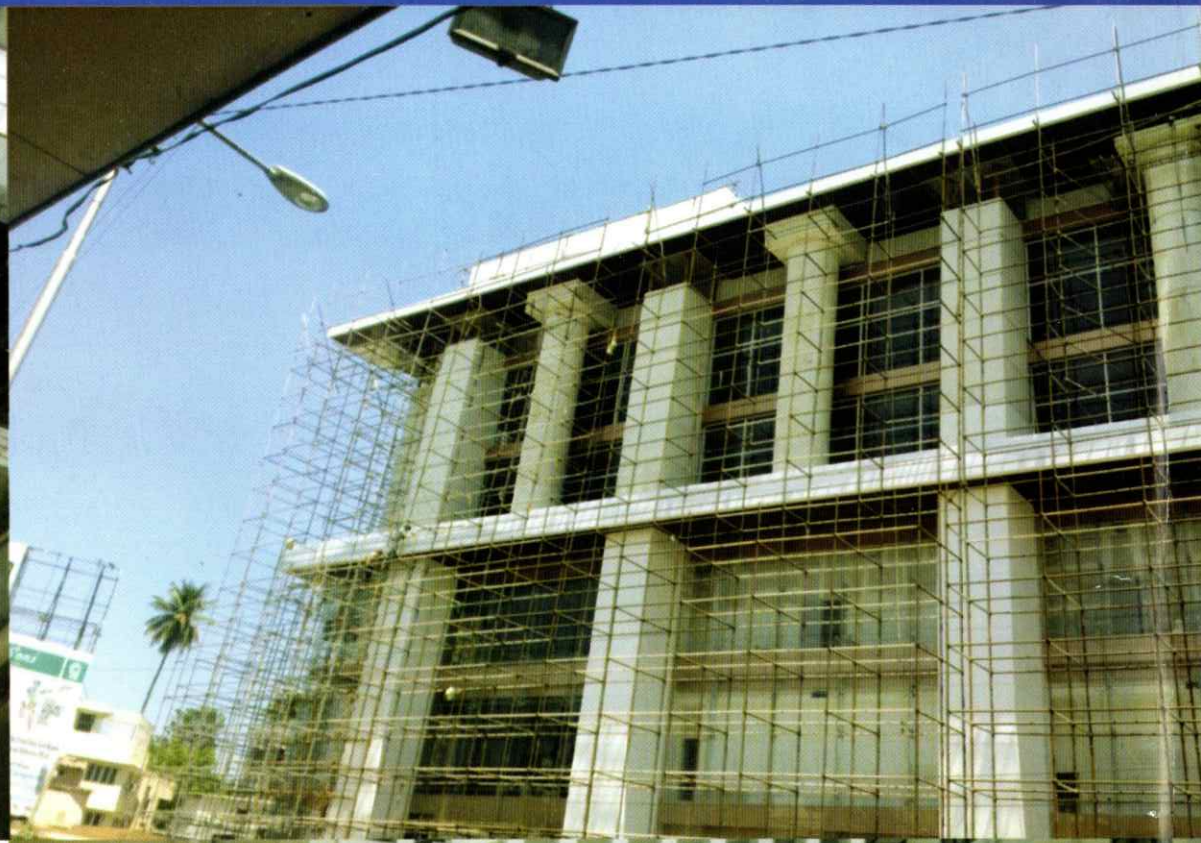
PROJECT NAME : DLF HOMES, BANGLORE

Client Name : DLF Limited

FRC Application : RDC Screens In Elevation, Cladding

Approximate Area : 1,00,000 Sq. Ft.





PROJECT NAME : CTS SHOPPING MALL, CHENNAI

Client Name : CTS Limited

GRC Application : GRC Columns Cornices in Elevation

Approximate Area : 60,000 Sq. Ft.





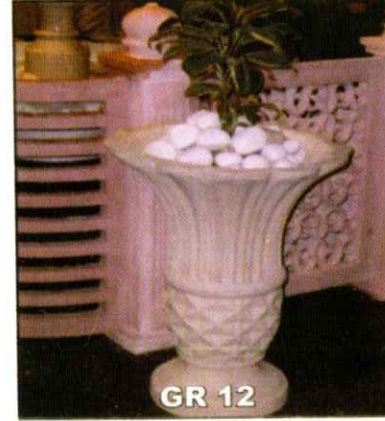
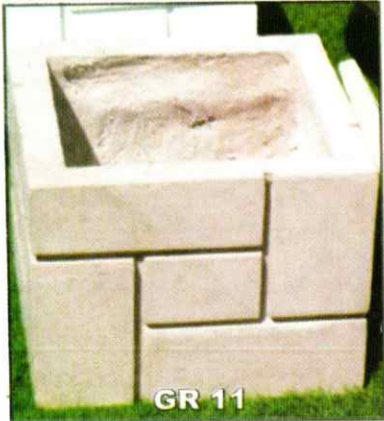
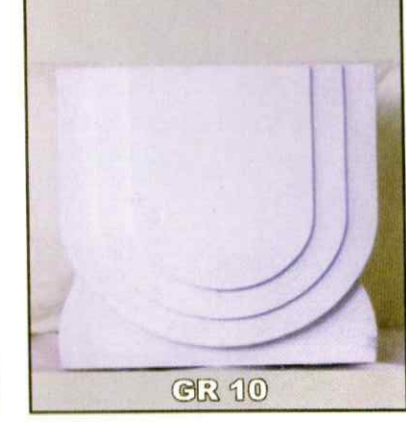
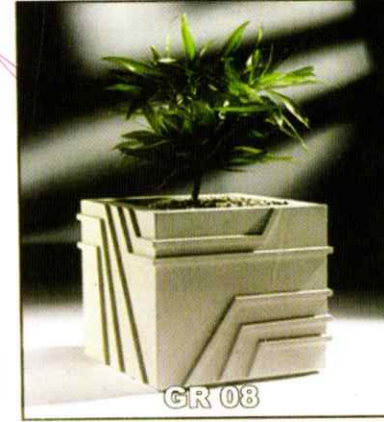
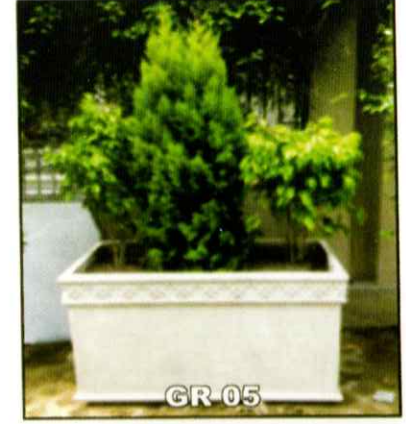
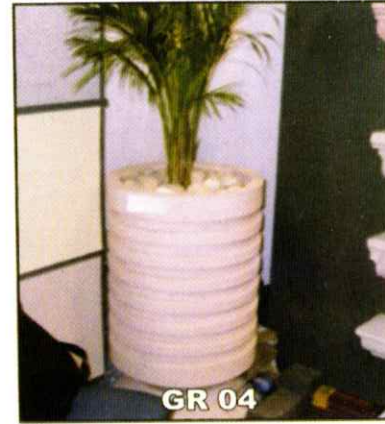
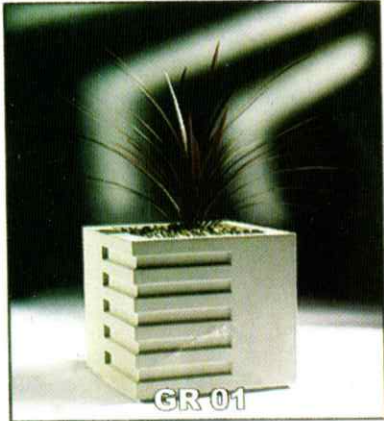
PROJECT NAME : GOVERNMENT HOSPITAL, CHENNAI

GRC Application : GRC Fine & Cornices In Elevations

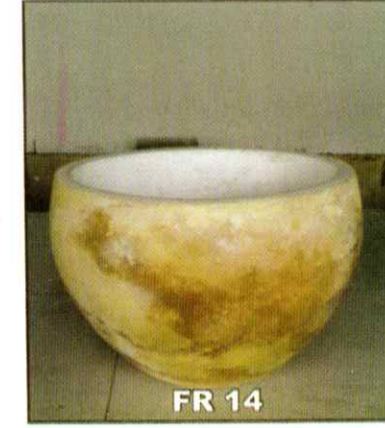
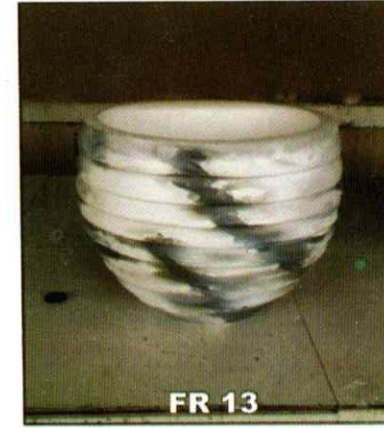
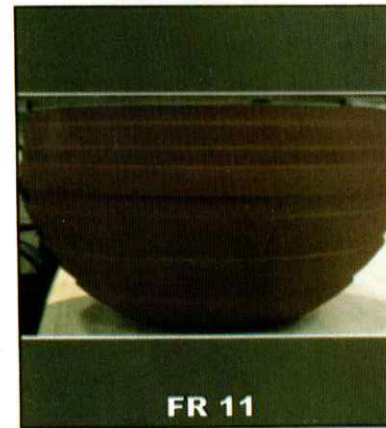
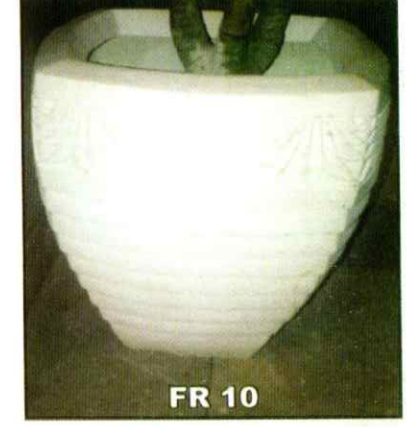
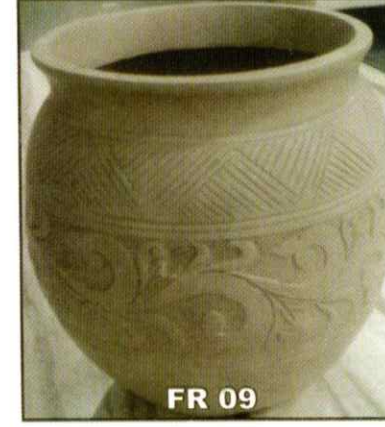
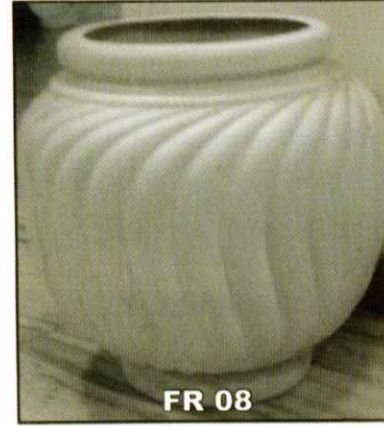
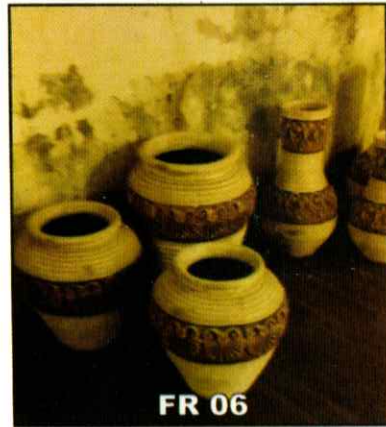
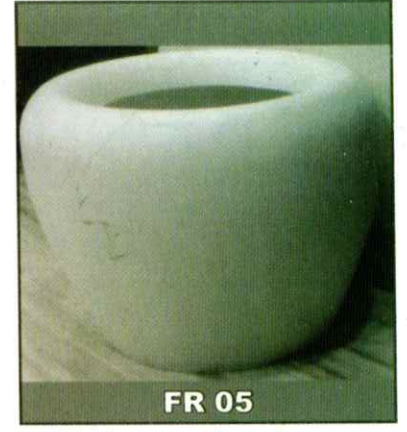
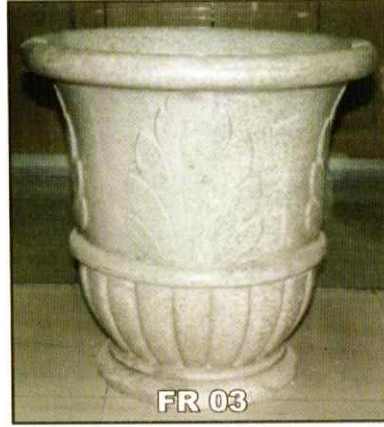
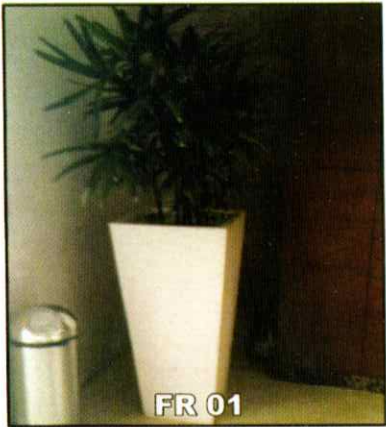
Approximate Area : 1,00,000 Sq. Ft.

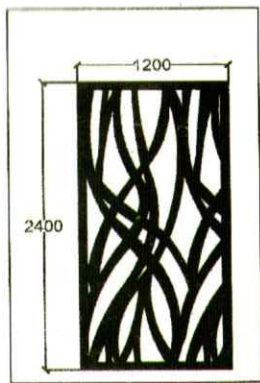


GRC Planters

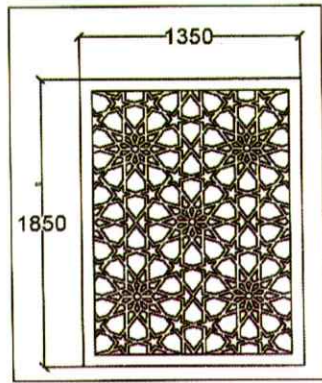


FRC Planters

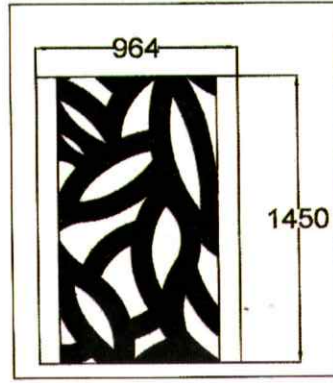




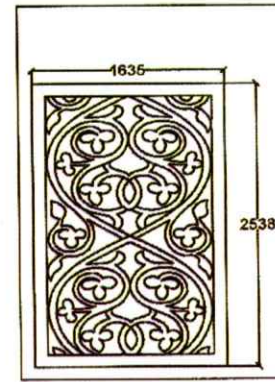
SCR 01



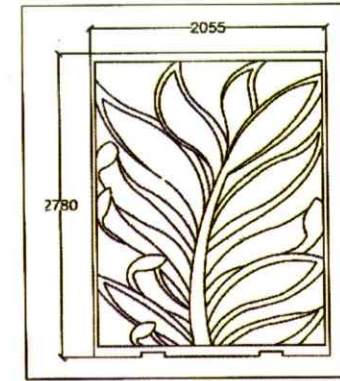
SCR 02



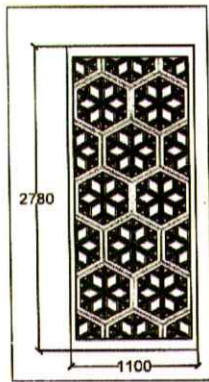
SCR 03



SCR 04



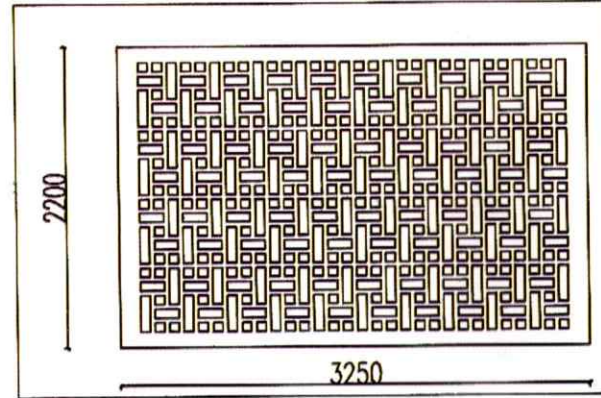
SCR 05



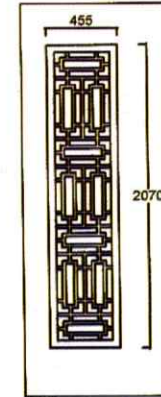
SCR 06



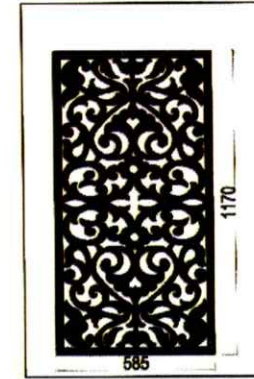
SCR 07



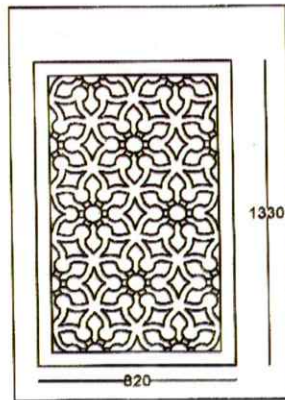
SCR 08



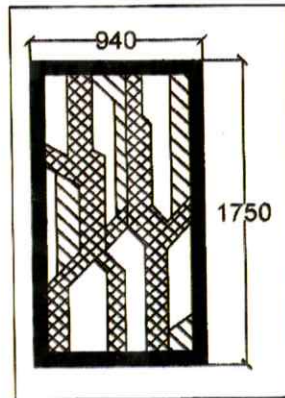
SCR 09



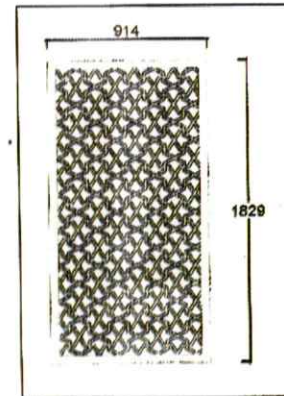
SCR 10



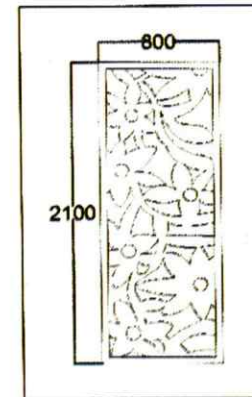
SCR 11



SCR 12

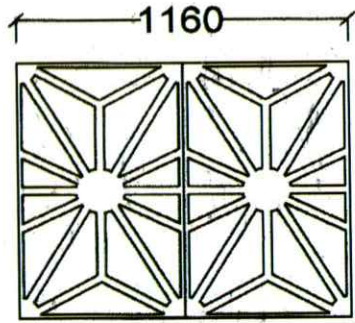


SCR 13

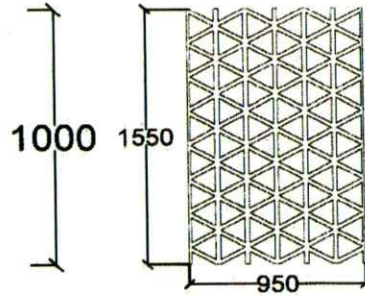


SCR 14

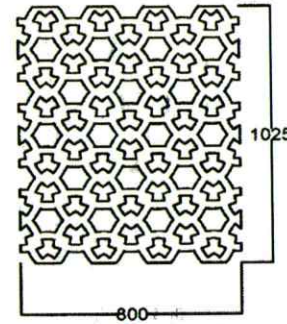
GRC Screen Designs with Border



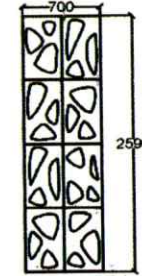
MSCR 01



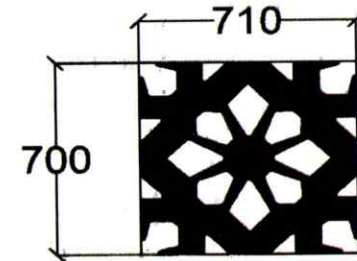
MSCR 02



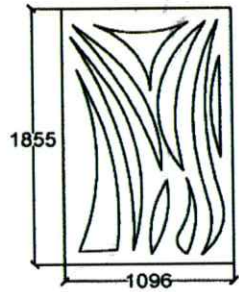
MSCR 03



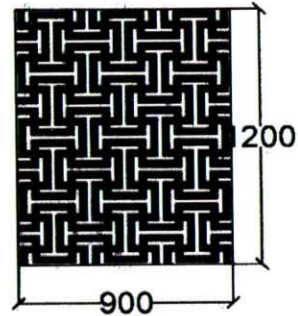
MSCR 04



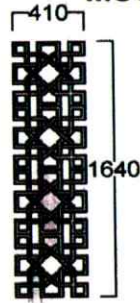
MSCR 05



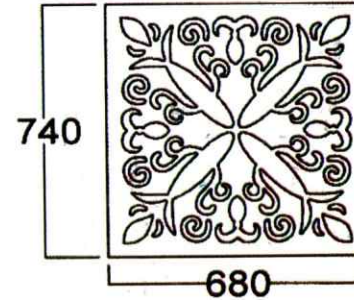
MSCR 06



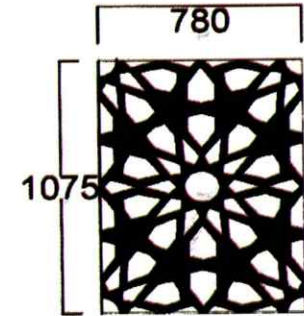
MSCR 07



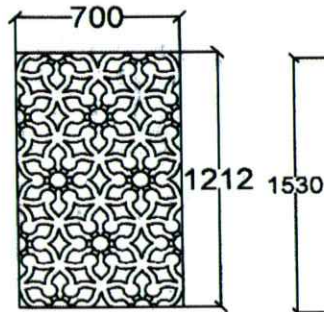
MSCR 08



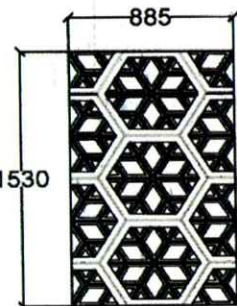
MSCR 09



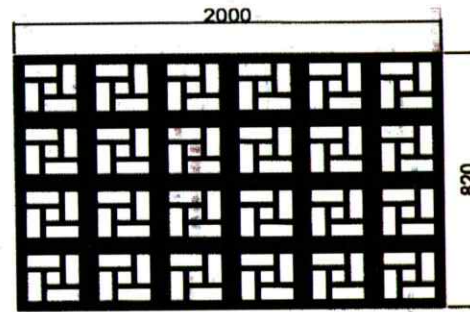
MSCR 10



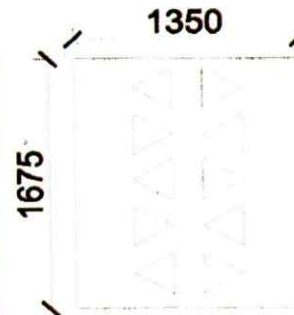
MSCR 11



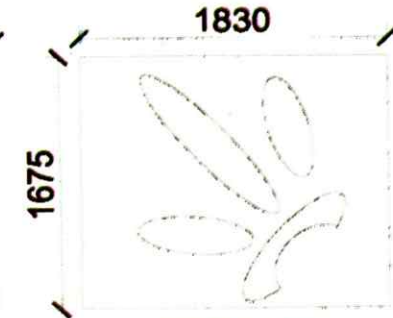
MSCR 12



MSCR 13



MSCR 14



MSCR 15

GRC Modular Screen Design



Decorearth GRC
We Decorate Your Dreams



We Decorate Your Dreams



DÉCOR EARTH GRC

Mfrs.: GlassFibre Reinforced Concrete
In Technical Collaboration with



Corpoprte Office: Plot no. 157, delhi alwar highway,
Tijara bypass, tijara alwar rajasthan pin:301411
Email:info@decorearthgrc.com
Visit us at:www.decorearthgrc.com